

Laminitis

WHAT IS LAMINITIS?

Laminitis is an extremely painful condition affecting the feet of horses. The term laminitis refers to inflammation of the laminae. When inflamed, the laminae become painful and swollen and their ability to suspend the pedal bone within the hoof capsule becomes compromised which can result in sinking and rotation of the pedal bone. In severe cases the pedal bone may end up prolapsing through the sole of the foot.

WHAT CAN CAUSE LAMINITIS

- Endocrine (hormonal) conditions (PPID and Equine Metabolic Syndrome)
- Massive carbohydrate overload
- Toxic insults (eg. Post colic surgery, colitis, retained placenta)
- Support limb laminitis



DIAGNOSIS OF LAMINITIS

The condition is diagnosed through the veterinary assessment of clinical signs and the underlying cause would need to be established from further investigations.

TREATMENT OF LAMINITIS

Generally, treatment of acute laminitis relies on box rest, anti-inflammatory and pain relieving drugs and adequate support of the feet. e.g frog supports or deep bedding.

X-ray are always recommended as part of the laminitis investigation.

Once the acute (sore) phase has passed, the vet will start to investigate to try and identify the underlying cause of the laminitis.



PREVENTION OF LAMINITIS

Prevention is most definitely better than a cure!
The most important factors are ensuring your horse is the correct weight, providing a suitable diet and maintaining adequate exercise.

FOLLOW THE ADVICE OF YOUR VET AND FARRIER



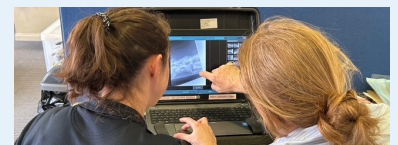
SYMPTOMS OF LAMINITIS

- Most commonly in the front feet however can be all 4, any individual or rarely the hind feet.
- Signs of pain, reluctance to move, facial tension, lack of interest in surroundings.
- Excessive heat in the feet.
- Strong digital pulse.
- Pain relieving stance e.g. leaning back on heels.
- Alternative lifting of the feet when resting (weight-shifting).
- A 'pottery' walk with the heel set down before the toe.
- Lameness exaggerated by turning on a hard surface.

There are also many more symptoms so always call a vet if any of the above are displayed or you're concerned.



X-ray of a laminitic foot (note rotation and re-modeling of the pedal bone)



Veterinary practices ALWAYS class laminitis as an EMERGENCY so should you have any concerns about your horse having laminitis or require further information specific to your horse, get in touch with your veterinary surgeon.